

# Genevieve Didion K-8

## TUESDAY-FRIDAY MORNING ARRIVAL PROCEDURES

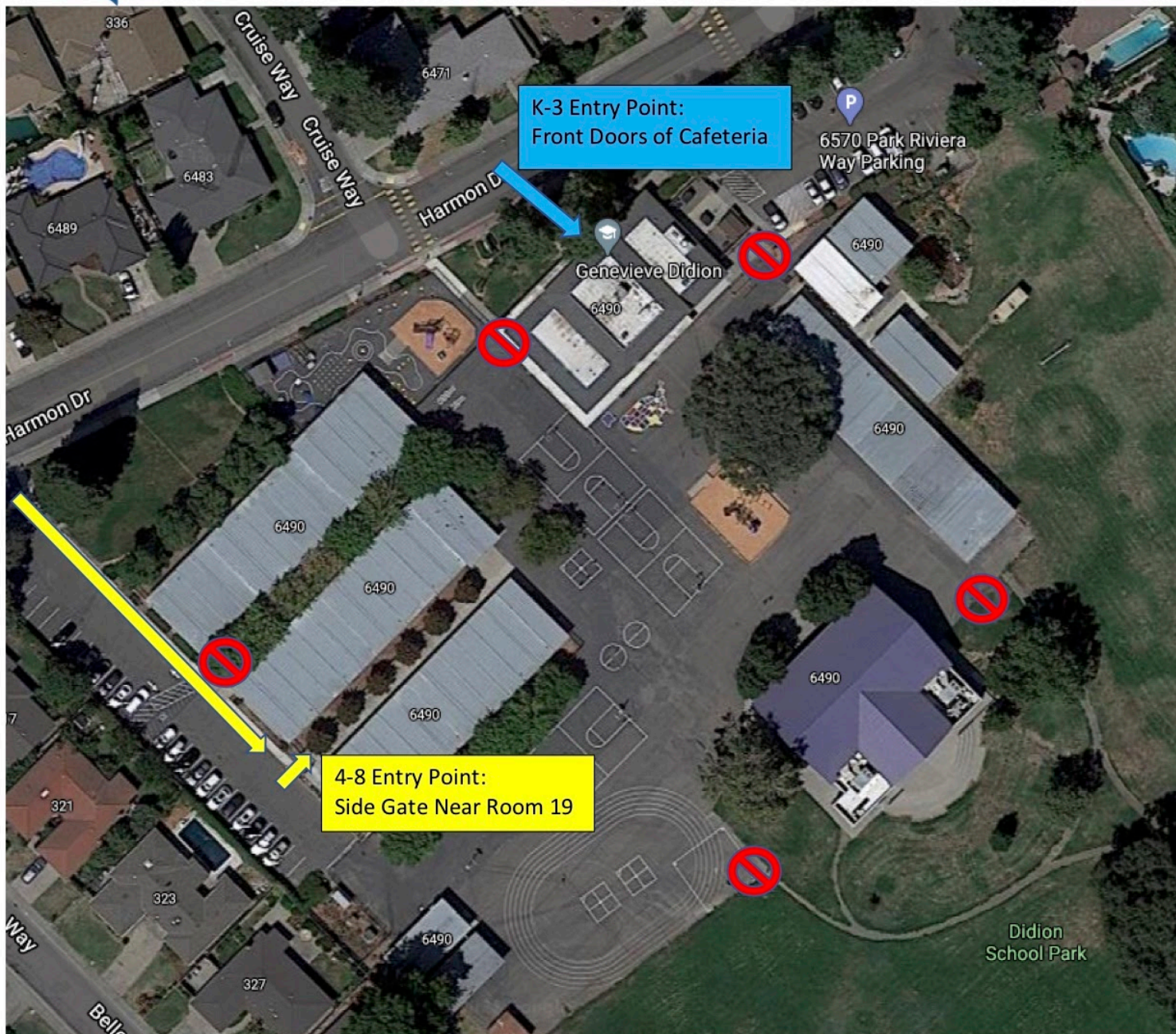
**Parents: Please do not enter staff parking lots as there may be student pedestrians**

<b>MORNING ARRIVAL</b>		
<i>Only Students Allowed Through Entry Points and On Campus*</i>		
<b>Who</b>	<b>Entry Point</b>	<b>Time</b>
Kinder, 1st, 2nd, 3rd	Front Doors of Cafeteria	7:45am
Kinder & 1st Grade ONLY* * 1 Parent/Guardian may enter the cafeteria to assist with the screening process and transition their child to their teacher, who will be waiting outside of the cafeteria. These parents will exit out the side gate closest to 4th R.	Front Doors of Cafeteria	7:45am
4th, 5th, 6th, 7th, 8th	Staff Parking Lot Side Gate near Room 19	7:45am

- Students will have their temperature scanned and will have to answer screening questions at each entry point. Each screened student will receive a sticker to show their teacher.
- Students will proceed directly to their class after being screened.
- Students who arrive between 8:10 and 8:30 should proceed directly to their classroom to be screened by the teacher.
- Students who arrive after 8:30 should check-in with the main office to be screened and sent to class.



# Didion K-8 Tuesday-Friday Morning **Arrival** Map



Entry and Temperature Scanning Point K-3



Entry and Temperature Scanning Point 4-8



No Entrance to campus. Please proceed to the appropriate Entry Point.



# Genevieve Didion K-8

## TUESDAY-FRIDAY DISMISSAL PROCEDURES

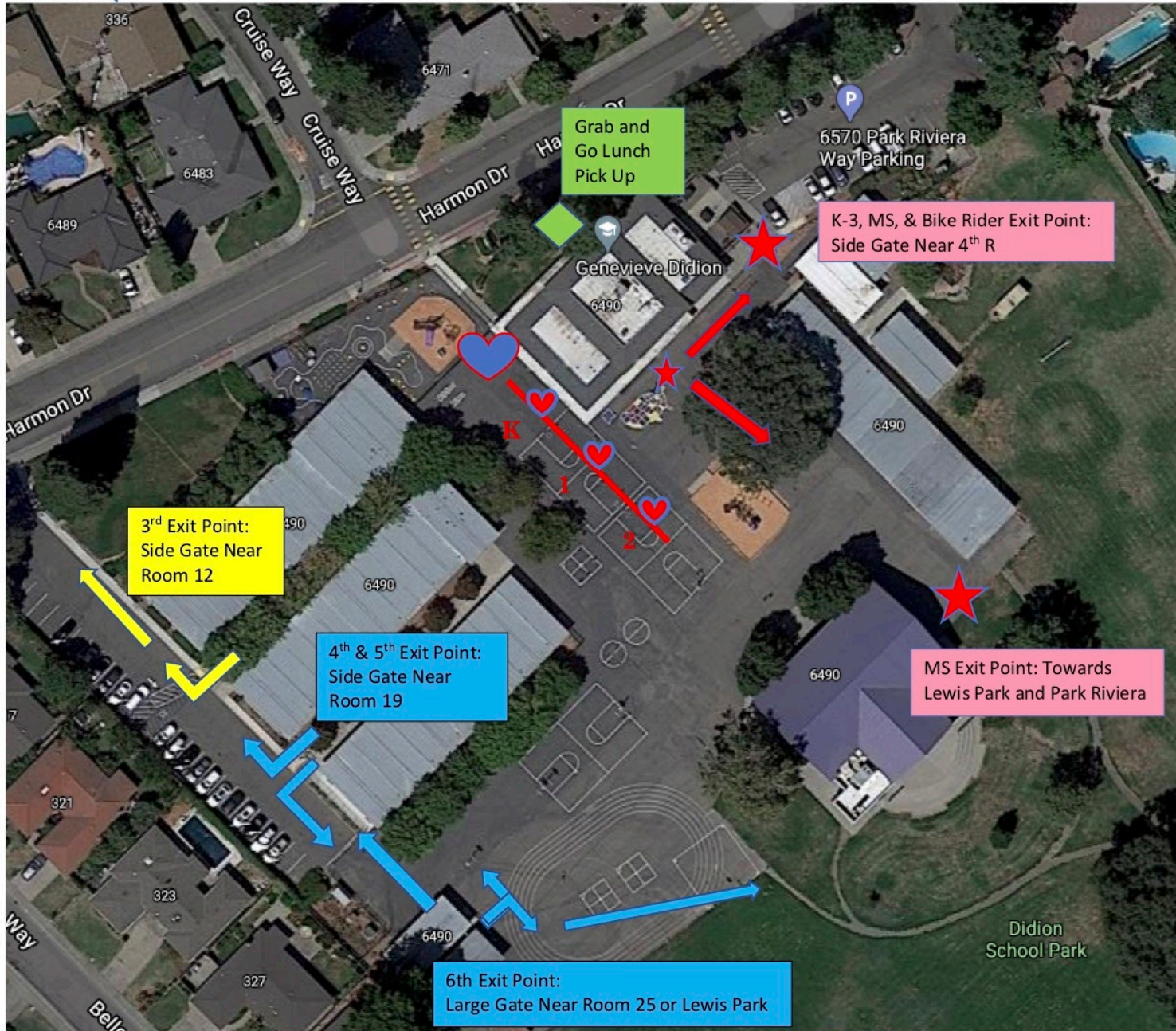
**Parents: Please do not enter staff parking lots as there may be student pedestrians**

<b>DISMISSAL</b>		
Grab and Go Lunches are available for pick-up in front of the cafeteria by students attending in-person on that day.		
<b>Who</b>	<b>Exit Point</b>	<b>Time</b>
<p style="color: blue;">Kinder, 1st, and 2nd Grade ONLY</p> <p>1 Parent/Guardian may enter the campus through the main entrance and proceed to their designated area to pick up their student. <u>Please wait behind the line.</u></p>	Side gate closest to 4th R	11:00am
3rd, 4th, 5th*	Staff Parking Lot Side Gates near Rooms 12 and 19. Students will proceed through the parking lot to Harmon Dr. to meet parents or walk home.	11:00am
6th*	Towards Lewis Park and Park Riviera or through the Staff Park Lot towards Harmon Dr. to meet parents or walk home	11:00am
7th, 8th*	Towards Lewis Park and Park Riviera or through the side gate closest to 4th R	11:20am

\* Students who ride bikes may go to the bike rack to retrieve their bike, and will exit through the side gate closest to 4th R.



# Didion K-8 Tuesday-Friday **Dismissal** Map



Grab and Go Lunch Pick up for In-Person Students



Exit Point for K-2, MS, and Bike Riders



K-2 Grade Parents (1 per child): Enter Here



K-2 Grade Parents (1 per child): Wait Here



3<sup>rd</sup> Grade Exit Point



4<sup>th</sup>, 5<sup>th</sup>, 6<sup>th</sup> Grade Exit Points

